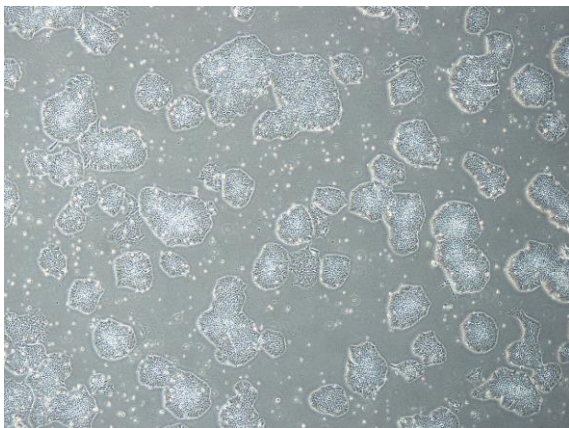
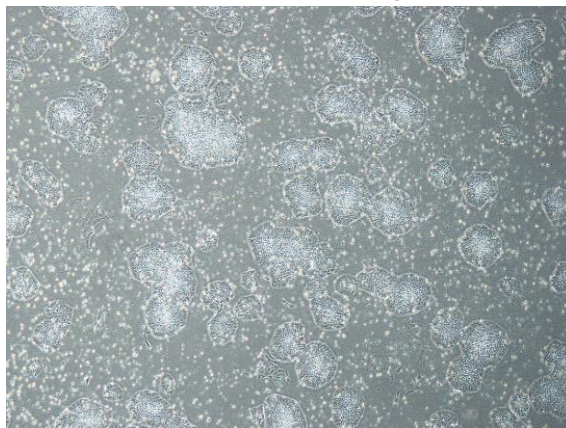


【 CiRA-j-1563 】 Morphology of iPSC colonies

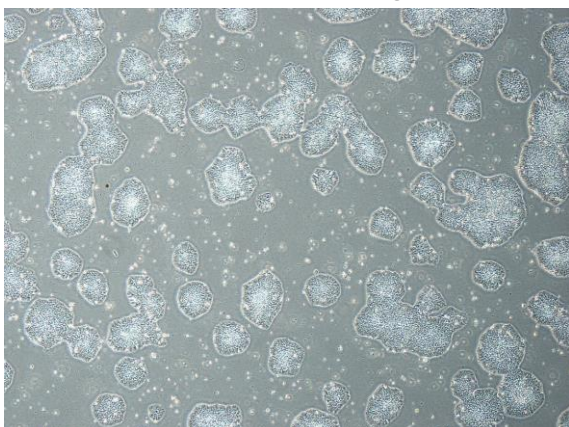
CiRA-j-1563-A: passage-3



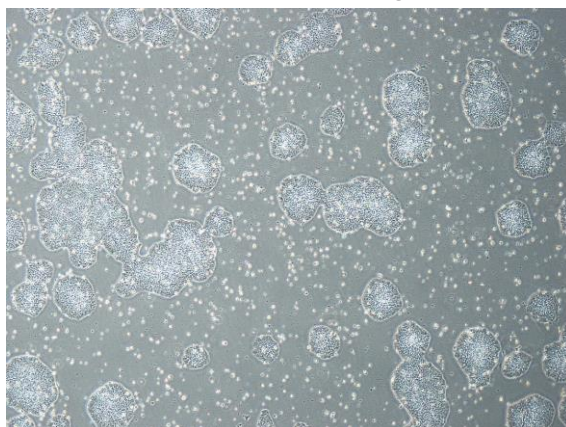
CiRA-j-1563-B: passage-3



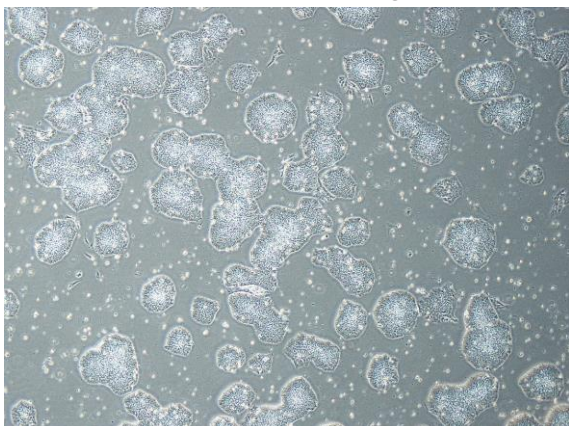
CiRA-j-1563-C: passage-3



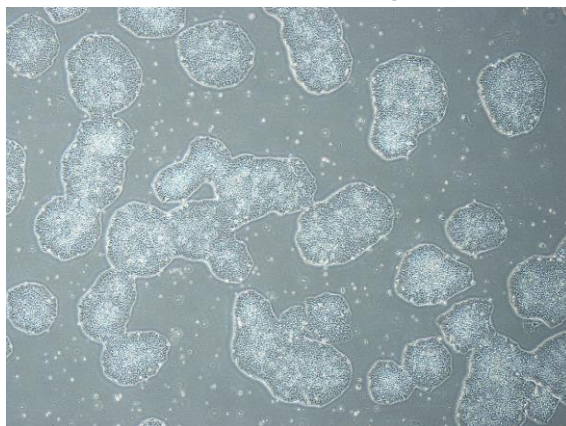
CiRA-j-1563-D: passage-3



CiRA-j-1563-E: passage-3



CiRA-j-1563-F: passage-3



(All images were captured at 4x magnification)